



# MONTGOMERY COUNTY

## DEPARTMENT OF HEALTH AND HUMAN SERVICES

### OFFICE OF HOUSING AND COMMUNITY DEVELOPMENT



#### 2022 DATA SNAPSHOT

#### Your Way Home Homeless Services

Established in 2014, Your Way Home Montgomery County is a Public-Private partnership with cross-sector collaborations between county agencies, nonprofit service providers, philanthropic foundations, property owners, faith organizations, homeless advocates, people with lived expertise, and other community partners committed to ending and preventing homelessness.



Served:

- 4,466 individuals
- 2,583 households
- 645 households with children

#### GENDER DEMOGRAPHICS, PERSONS SERVED



**52%**

2,323 Women and girls



**47%**

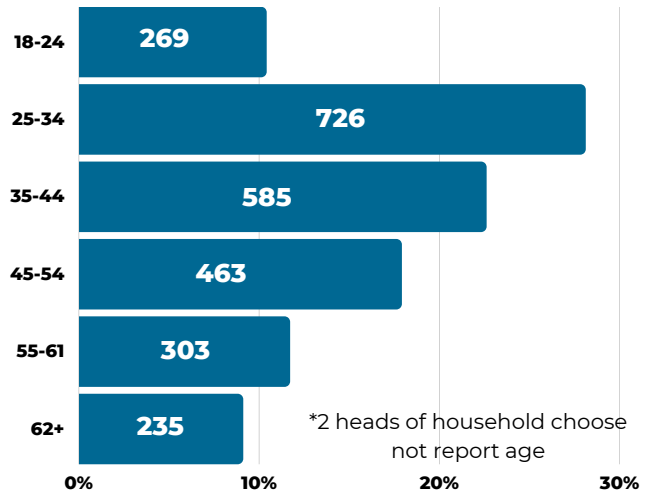
2,119 Men and boys



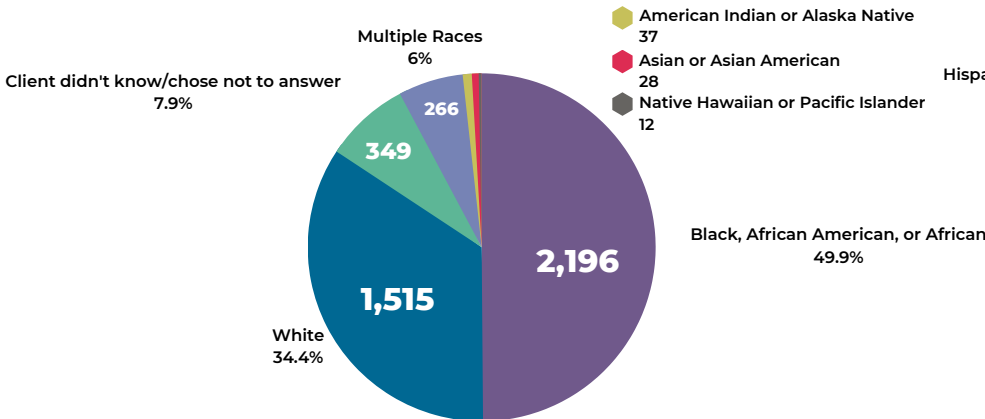
**10 Transgender Individuals and 1 Nonbinary Individual**

\*13 individuals chose not to report gender

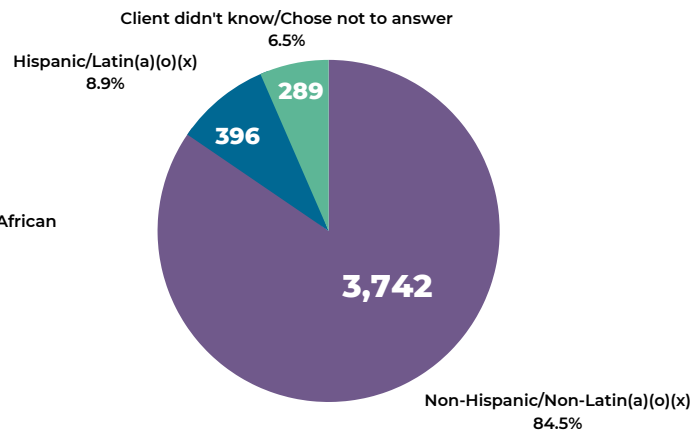
#### AGE DEMOGRAPHICS, HEADS OF HOUSEHOLD



#### RACIAL DEMOGRAPHICS, PERSONS SERVED



#### ETHNICITY DEMOGRAPHICS, PERSONS SERVED



#### FOUNDATION FUNDING



The Your Way Home Initiative Fund is held by the Montgomery County Foundation Inc., which aligns private support for the program. The private sector grants and donations that make up the Your Way Home Fund pay for housing costs that are not supported by public funding as well as capacity building initiatives that strengthen system performance.

In 2022 the Fund distributed: **\$131,500** and served **2,603 persons in 1,890 households.**

## How the Your Way Home Partnership and Crisis Response System are Working to End and Prevent Homelessness

### YOUR WAY HOME CALL CENTER



Supported 9,110 calls



Street Outreach served 2,200 individuals and a total of 1,319 households



Emergency Shelters served 976 Individuals and a total of 685 households



Housing Resource Centers conducted 144 successful move-ins through Rapid Rehousing



236 Housing Vouchers were successfully leased by Your Way Home clients through the Montgomery County Housing Authority

### MAKING HOMELESSNESS NON-RECURRING

Between 2020 and 2022, 84% of Rapid Rehousing clients have maintained permanent housing stability after exiting and have not returned to homelessness.

Clients served by emergency shelter spent an average of 53 days in shelter before exiting to permanent housing.

Your Way Home's housing stability referrals are essential to assisting clients enrolled in rapid rehousing to connect to services like job training and education to maintain housing.

### PREVENTING HOMELESSNESS

#### EMERGENCY RENT AND UTILITIES COALITION

The Emergency Rent and Utilities (ERUC) Program is designed to provide housing stability to low- and moderate-income Montgomery County, Pennsylvania, residents at risk of eviction and/or homelessness as a result of COVID-19.

\$42,598,244  
IN RENT AND  
UTILITY  
ASSISTANCE  
DISTRIBUTED



4,917  
HOUSEHOLDS  
SERVED

Equitable Access:  
55% of ERUC clients were  
Black or African  
American, while 32%  
identified as White.



#### EVICTION PREVENTION AND INTERVENTION COALITION

The Eviction Prevention and Intervention Coalition (EPIC) is a project designed to stabilize vulnerable families and individuals in Montgomery County who are facing eviction by providing them with free legal and social services support on the day of their eviction hearing.

60  
HOUSEHOLDS  
SERVED

In 2022, there were 7,343  
eviction filings in  
Montgomery County.

\$290,163  
IN RENTAL ASSISTANCE  
DISTRIBUTED

# 2022 DATA SNAPSHOT

## Providing a Path to Housing Stability and Affordability

### AFFORDABLE HOUSING DEVELOPMENT

In 2022, HOME Affordable Housing Development completed three projects:

- Federation Housing's Davisville Senior Apartments: 54 one-bedroom units for low-income seniors
- 4 new Habitat for Humanity units in Hatfield, intended for households at 60% or below AMI
- Genesis Housing completed the acquisition, rehab, and resale of a homebuyer purchased affordable unit in Pottstown in December 2022



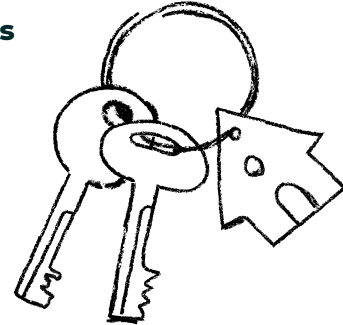
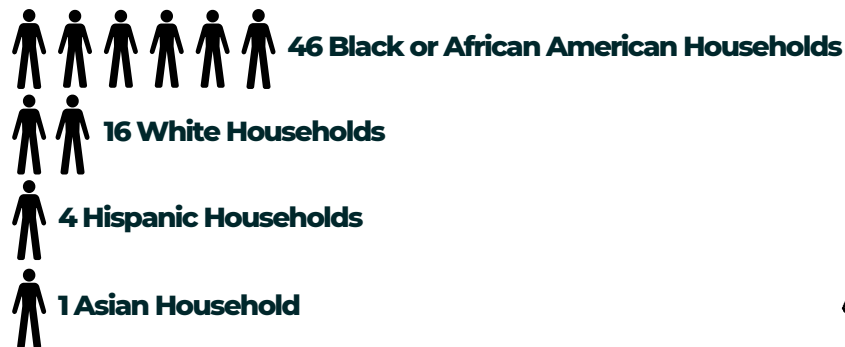
In the coming year, **60 new units** are in the pipeline for affordable housing development in Montgomery County

### FIRST-TIME HOMEBUYERS PROGRAM

The Homebuyers Program, established and administered by the Commissioners and the Office of Housing & Community Development, is directed to assist low, moderate, and median income households interested in purchasing a home in Montgomery County. Eligible participants received \$10,000 assistance with down payment and closing costs.

#### 2022 FTHB APPLICANTS DEMOGRAPHICS

**73 TOTAL APPLICATIONS APPROVED\***



**\$50,000  
DISTRIBUTED**

The program's participants reflect historic need and a commitment to equity in first-time buying assistance. In a difficult housing market, 5 First-Time Homebuyer program participants closed on their homes. These buyers included 3 Black or African American households, 1 White household, and 1 household which did not provide identity information. Homes were purchased in the municipalities of Norristown Borough, West Norriton Township, Pottstown Borough, and Abington Township.

\*6 households did not provide identity information

According to the National Low Income Housing Association's Gap Report:

- There are 37 affordable rental units per 100 households making below \$35,000 in Montgomery County.
- There are approximately 30,591 Renter Households with household incomes below \$35,000 (34% of the area median income) in Montgomery County.
- 65.5% of Renter Households with household incomes below \$35,000 are severely cost burdened, or pay more than 50% of their monthly income toward gross rent (including utilities).